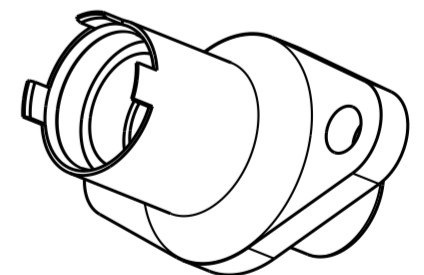
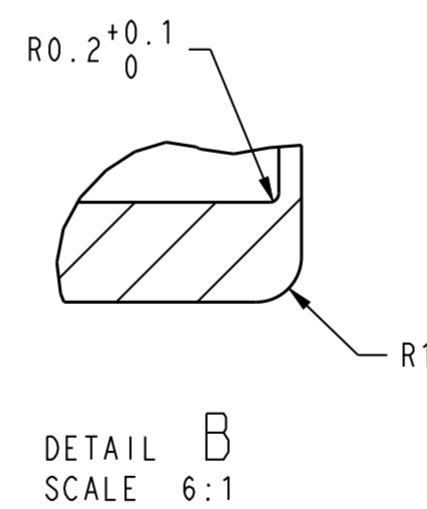
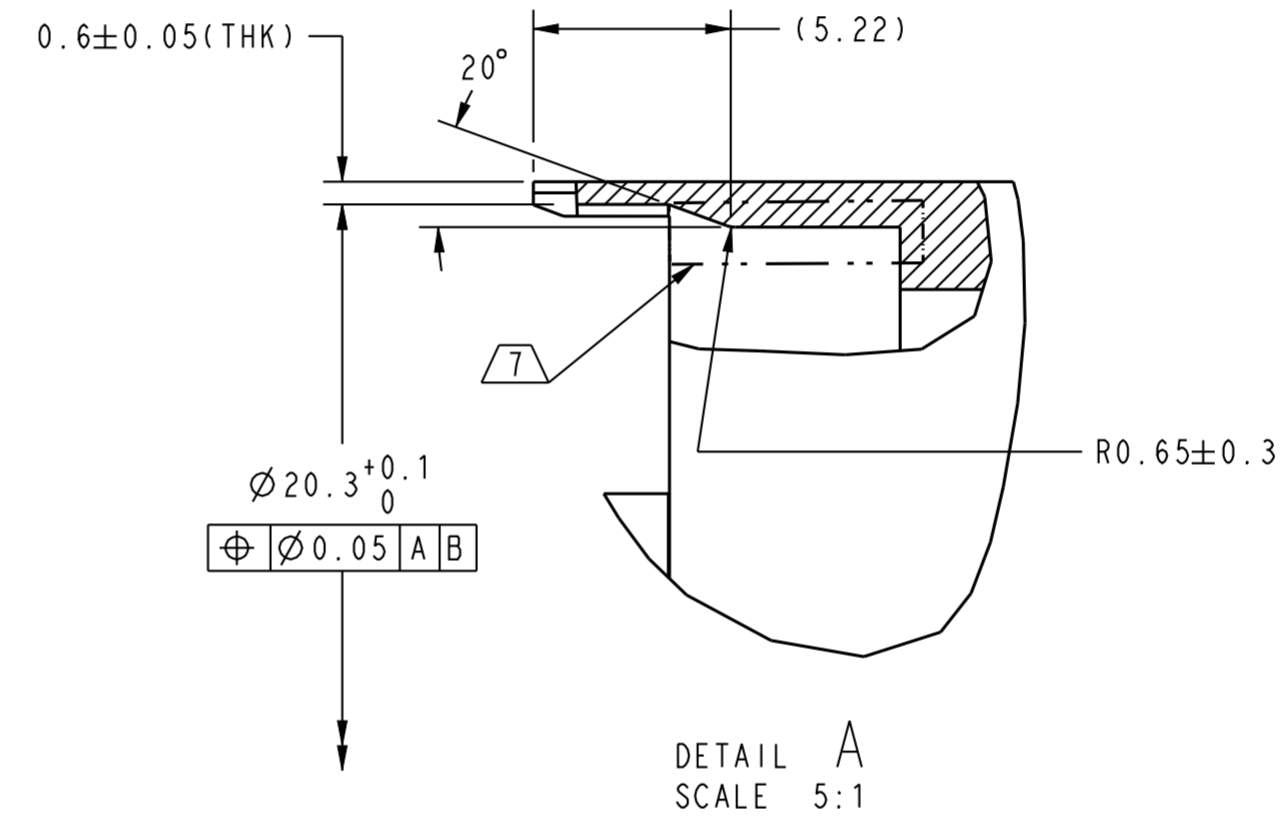
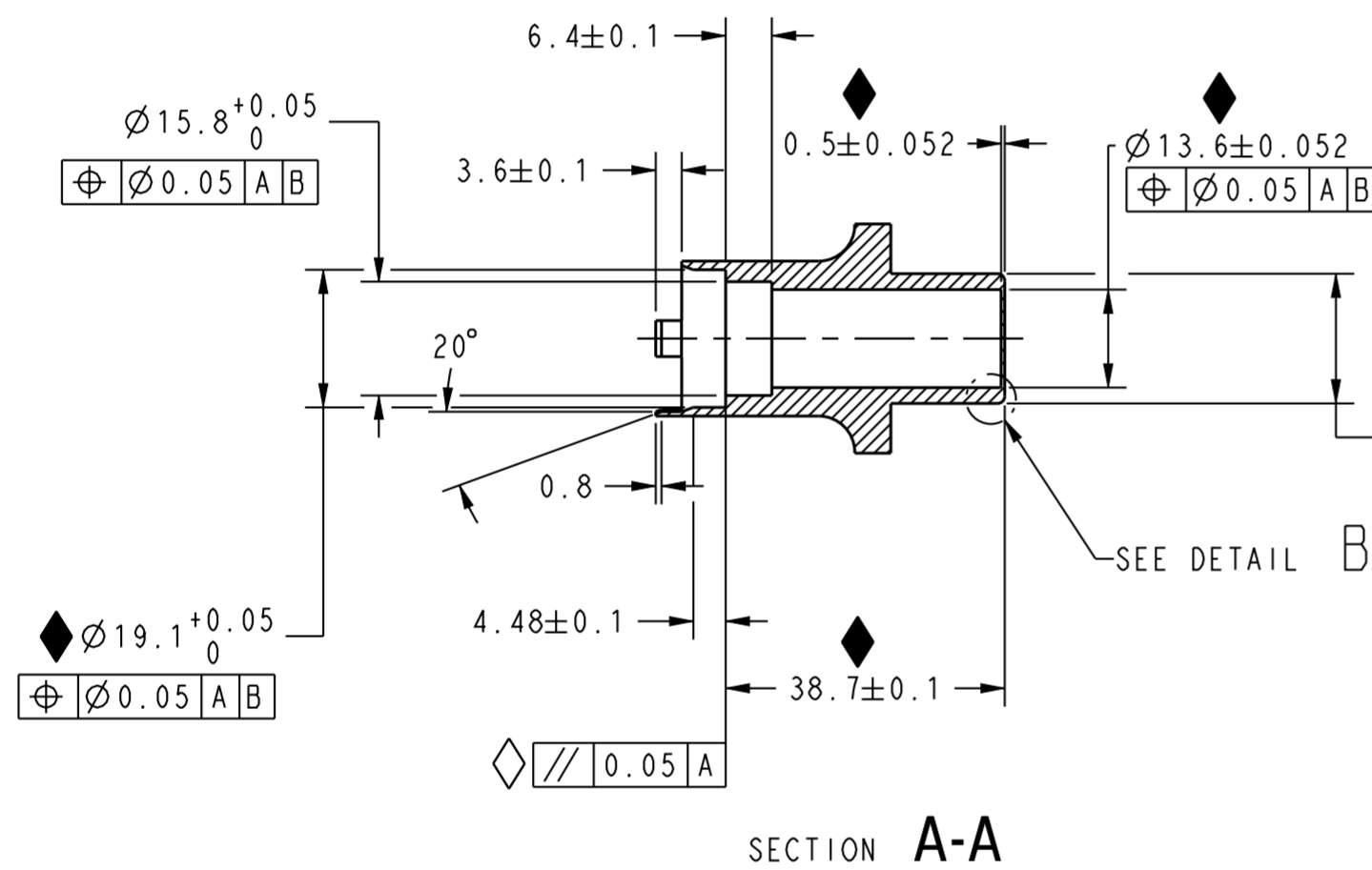
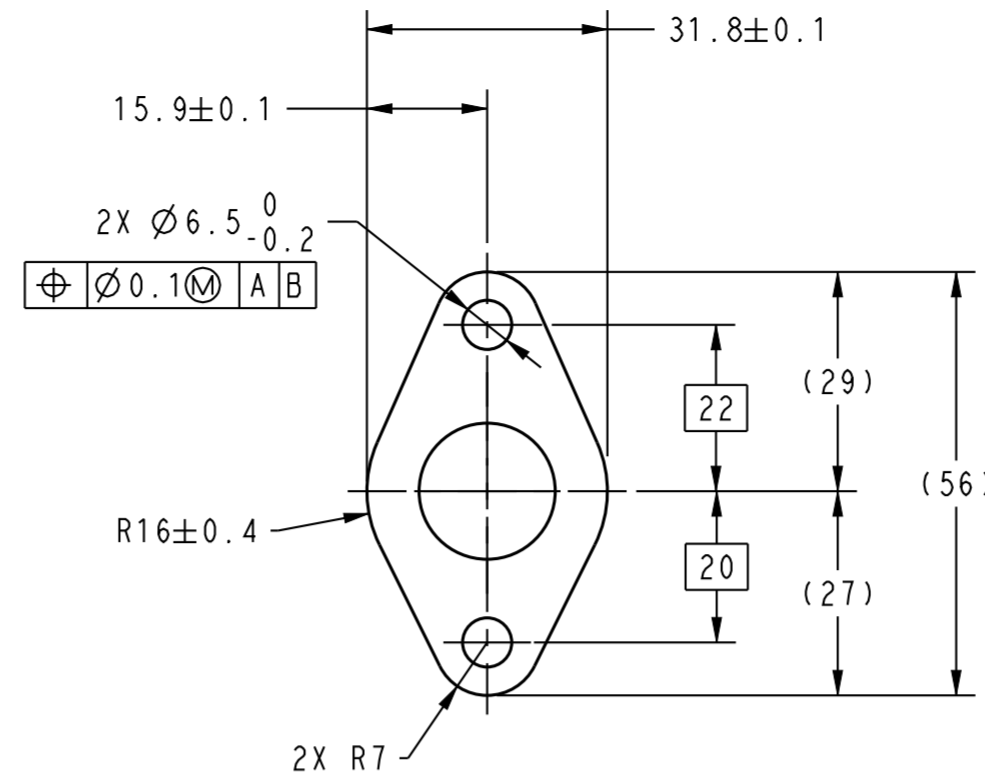
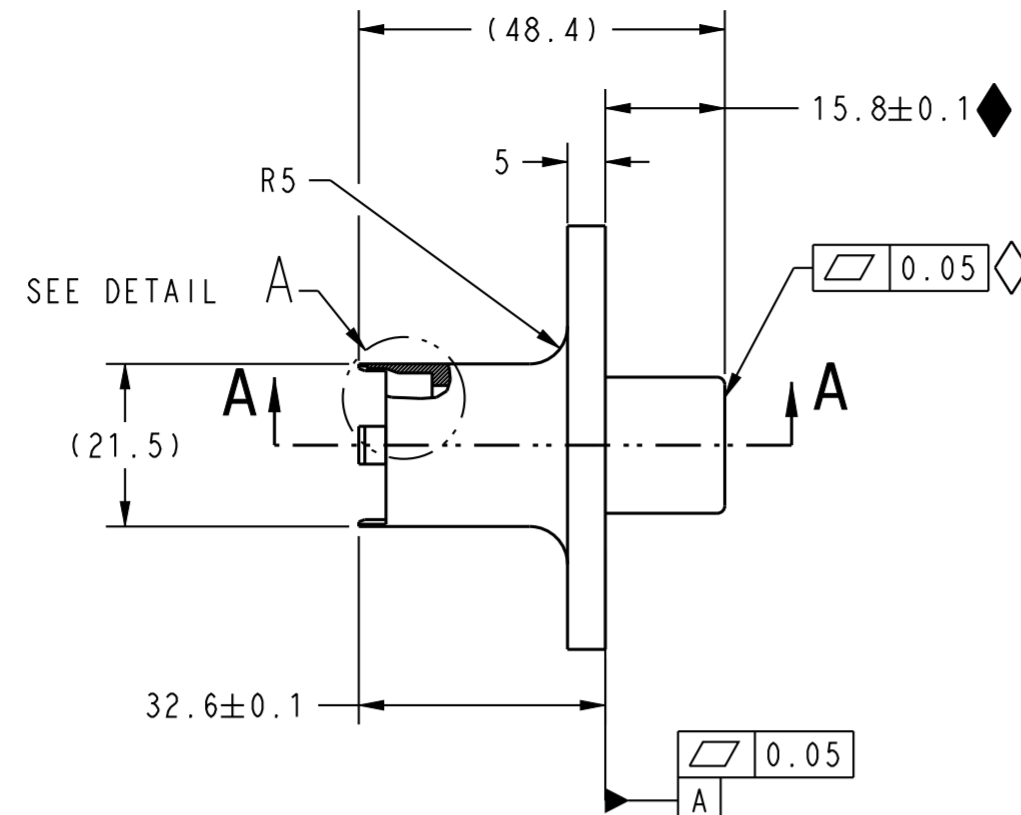
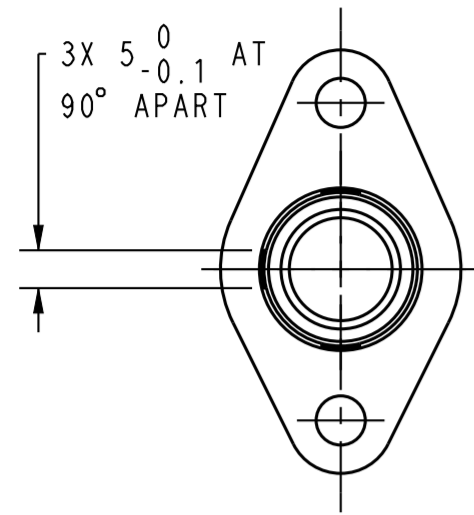


PART NUMBER
50036895-001

REVISION HISTORY					
REV	DOCUMENT	DESCRIPTION	CHG'D BY	DATE	APPROVED
E	0159093	UPDATED FORMAT WITH CHANGES	RGA	2019-12-02	B. KIPP



ISOMETRIC VIEW

NOTES:

- MATERIAL : STAINLESS STEEL UNSS304 IAW ASTM A276.
- FINISH: $\sqrt{3.2}$ OR BETTER IN MACHINED SURFACE.
- ◆ INDICATES KPC (KEY PRODUCT CHARACTERISTICS) AND MUST SHOW A MINIMUM Ppk 1.67 AT PRODUCTION STARTUP AND MINIMUM ONGOING PROCESS CAPABILITY INDEX Cpk 1.33
- PARTS TO BE FREE FROM BURRS, CRACKS, SHARP EDGES.
- SHARP CORNERS MAY HAVE R0.2MAX, UNLESS OTHERWISE SPECIFIED.
- NOTE REMOVED.
- FINISH: $\sqrt{0.8}$ OR BETTER IN THE INDICATED O-RING SEATING SURFACE.
- CERTIFICATION OF COMPLIANCE FOR MATERIAL TRACEABILITY REQUIRED FOR EACH SHIPMENT.
- PART MUST MEET THE REQUIREMENTS OF THE EUROPEAN UNION RoHS DIRECTIVE 2002/95/EC.
- ◇ INDICATES CRITICAL TO QUALITY.

材料 304
表面粗糙度 3.2
表示 KPC (关键产品特性), 必须显示
生产启动时最低 Ppk 为 1.67, 最低
持续过程能力指数 Cpk 1.33
产品不得有毛刺、裂纹、锐边
除非另有规定, 拐角处的最大 R0.2。
O型圈密封面光洁度 0.8
材料合规性证明
每批货物的可追溯性。
零件必须符合的 ROHS 要求
◇ 表示质量关键点

UNLESS OTHERWISE SPECIFIED		THIRD ANGLE PROJECTION		数量 7064			
DIMENSIONS ARE IN mm				TITLE CASTED HOUSING NOSE LENGTH 15.8mm			
DECIMAL TOL	NO PLACE --- ±0.2			SIZE A2	CAGE CODE -	DWG NO 50036895	TYPE E
	1 PLACE --- ±0.1			SCALE 1:1	REF WT.	SHEET 1 of 1	REV E
	2 PLACE --- ±0.05			RELEASE DATE 2008-10-15			
	3 PLACE --- ±0.005	DRW: GR 2008-10-15					
ANGULAR TOL - ±1° CHAMFER -		RDE: -					
MATERIAL SEE NOTE 1		OA: -					
FINISH SEE NOTE 2		CHK: TP	2008-10-15				
APPLICABLE DOCUMENTS: ASME Y14.100-2013 ASME Y14.5-2009							
COMPUTER GENERATED DRAWING: PRO/ENGINEER							